

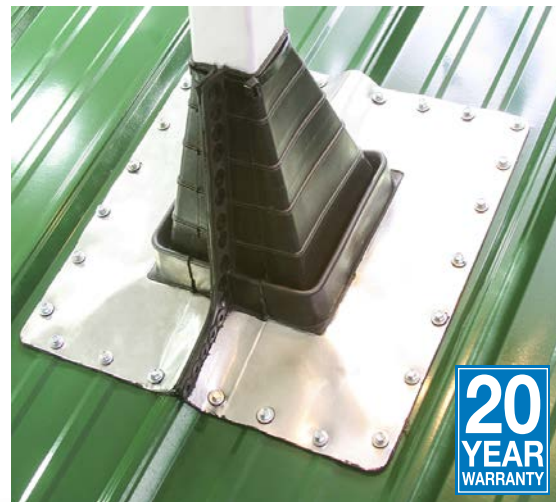
# Square Vent Master Flash<sup>®</sup>

Designed for **square vent applications**

Advanced Ozone Resistance tested to...		EPDM 70 hour @ 500 pphm
High Temperature Resistance Tested to	Intermittent Continuous	+135°C (+275°F) +100°C (+212°F)
Low Temperature Resistance tested to...		- 55°C (-67°F)
Compression Set Maximum...		25%

\*Complete specification data and testing methods are available upon request.

For retrofit applications these flashings were designed to seal existing pipes/vents that requires a wrap-around existing or hard to reach installation



**20**  
YEAR  
WARRANTY

## Made of EPDM Rubber

These flashings are compounded specifically for maximum resistance to weathering due to zone and ultraviolet light.

## Easy On-Site Customization

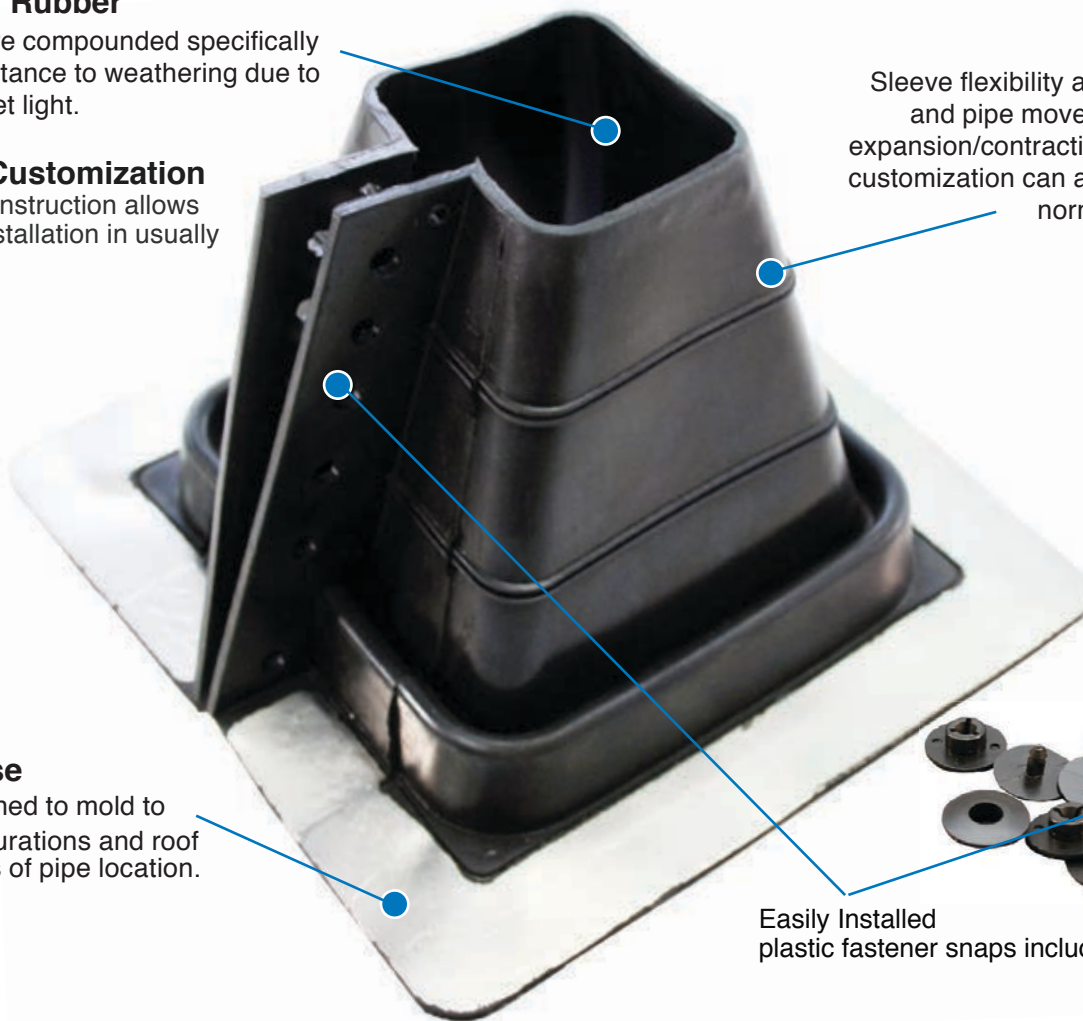
Fast, one piece construction allows for easy on-site installation in usually 5 minutes.

## Flexibility

Sleeve flexibility absorbs vibration and pipe movement caused by expansion/contraction. Easy on-site customization can accommodate all normal installations.

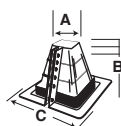
## Adaptable Base

The base is designed to mold to most panel configurations and roof pitches regardless of pipe location.



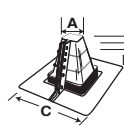
Easily Installed plastic fastener snaps included

Name	Part #	Compound	Pipe Range	Base
#1	RF101BP-SQ	Black EPDM	2-1/2" - 4" (63 - 101mm)	8" (203mm)
#2	RF201BP-SQ	Black EPDM	2-1/4" - 5" (57 - 127mm)	16-3/4" (400mm)



### #1 Square Vent Flashing Details

A-Top Opening	2-1/2" (63mm)
B-Cut to suit pipe size	2-1/2" to 4" (63-101mm)
C-Base	8" (203mm)



### #2 Square Vent Flashing Details

A-Top Opening	2-1/4" (57mm)
B-Cut to suit pipe size	2-1/4" to 5" (57-127mm)
C-Base	15-3/4" (400mm)