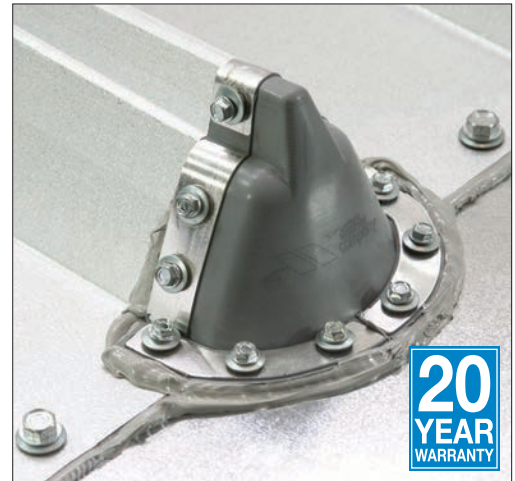


Master Cap Master Flash®

Standing Seam Roof End Cap Flashing

| | | |
|---|----------------------------|------------------------------------|
| Advanced Ozone Resistance tested to... | EPDM 70 hour @ 500 pphm | |
| High Temperature Resistance Tested to | Intermittent Continuous | +135°C (+275°F) +100°C (+212°F) |
| Low Temperature Resistance tested to... | - 55°C (-67°F) | |
| Compression Set Maximum... | 25% | |

*Complete specification data and testing methods are available upon request.



APPLICATIONS:

Skylights • Metal Curbs • Ridge Applications
Job site Retrofit

Flexible width allows for most panel configurations

Base allows application at both terminating points of the sheeting or roofing material

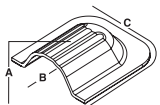


Flexible width allows for most panel configurations

Base Allows side wall of end cap to form on roof panels

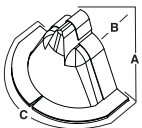
Weather Protection Made of EPDM

These flashings are compounded specifically for maximum resistance to weathering due to ozone and ultraviolet light.



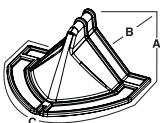
Mini End Cap Flashing Details

| | |
|------------------|---------------------------|
| A-Overall Height | 3/4" (19mm) |
| B-Inner Depth | 2" (50mm) |
| C-Base | 2-3/4"W x 3"L (69Wx76Lmm) |



#1 End Cap Flashing Details

| | |
|------------------|----------------------------|
| A-Overall Height | 3" (76mm) |
| B-Inner Depth | 2" (50mm) |
| C-Base | 4-1/4"W X 3"L (107Wx76Lmm) |



#2 End Cap Flashing Details

| | |
|------------------|-------------------------------|
| A-Overall Height | 3-1/4" (82mm) |
| B-Inner Depth | 4-1/4" (107mm) |
| C-Base | 5-3/4"Wx7-1/4"L (146Wx184Lmm) |



Mini End Cap

#2 End Cap

#1 End Cap