

Fix-A-Flash MASTER FLASH® Installation Guide

ISO Quality, Price & Availability / Two Compounds

ADVANCED OZONE RESISTANCE tested to...	EPDM 70 hour @ 500 pphm	SILICONE 70 hour @ 500 pphm
HIGH TEMPERATURE RESISTANCE Tested to	+135°C (+275°F) +100°C (+212°F)	+260°C (+500°F) +225°C (+437°F)
LOW TEMPERATURE RESISTANCE tested to...	- 55°C (-67°F)	- 74°C (-101°F)
COMPRESSION SET Maximum...	25%	50%

*Complete specification data and testing methods are available upon request.



Weather Protection Made of EPDM or Red Silicone,

These flashings are compounded specifically for maximum resistance to weathering due to ozone and ultraviolet light.



Modification Made Simple

Easy to see pipe diameters make for painless on-site installation.



Large Base Dimension

The base is designed for an oversized hole cut for your pipe flashing.

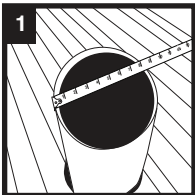
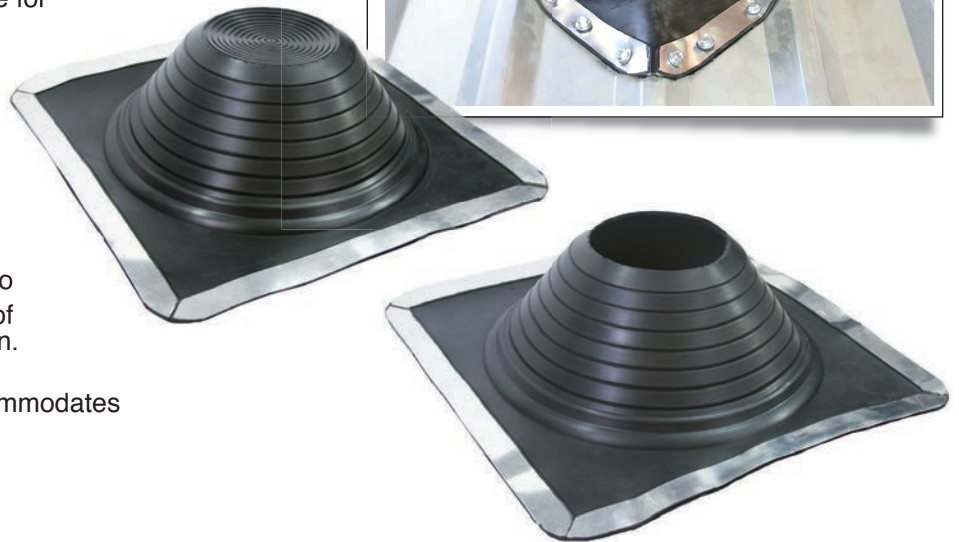


Adaptable Base

The base is designed to mold to most panel configurations and roof pitches regardless of pipe location.



Easy on-site customization accommodates all normal installations.



1 Measure for correct pipe size



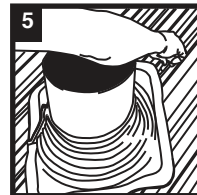
2 Choose pipe opening and trim.



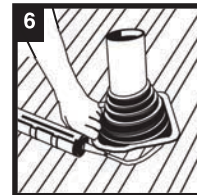
3 Slide flashing over Pipe using water.



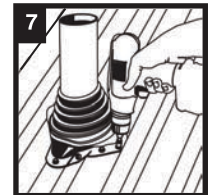
4 Form flashing to roof profile



5 Trace Flashing



6 Apply Sealant



7 Fasten flashing to complete

To see our complete product line go to www.aztecwasher.com



aztec
washer
company

AZTEC WASHER COMPANY
Since 1968

