

# UNIVERSAL MASTER FLASH®

**20**  
**YEAR**  
WARRANTY

## ALL AROUND PERFORMANCE

### Ozone and UV Protection

Flashings are made of E.P.D.M and Silicone, and are designed for maximum resistance to all weather conditions.

### On-Site Customization

Pipe diameters can be seen clearly for proper fitting.

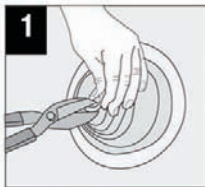
### Adaptable Base

The base is designed to mold to most panel configurations and roof pitches regardless of pipe location.

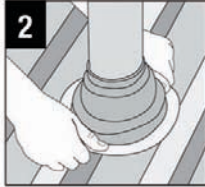


## All Around Design Excellence

This universal flashing has been designed to fit virtually all panel configurations. Sleeve flexibility absorbs vibration and pipe movement caused by expansion/contraction. Easy on-site customization can accommodate all normal installations.



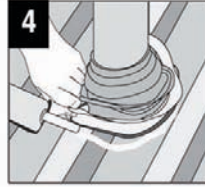
**1**  
Choose pipe opening and trim



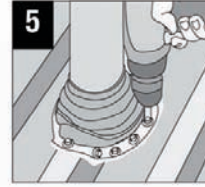
**2**  
Slide over pipe



**3**  
Form to roof profile



**4**  
Apply sealant



**5**  
Fasten to complete



To see our complete product line go to [www.aztecwasher.com](http://www.aztecwasher.com)



# UNIVERSAL MASTER FLASH®

**20  
YEAR  
WARRANTY**

ISO Quality, Price & Availability / TWO COMPOUNDS / 9 SIZES



**BRIGHT RED**



**GREY**



**LIGHT BLUE**



**TERRA COTTA**



**DARK BLUE**



**BLACK**



**DARK GREEN**



**WHITE**



**LIGHT GREEN**



**BROWN**

ADVANCED OZONE RESISTANCE tested to...	EPDM 70 hour @ 500 pphm	SILICONE 70 hour @ 500 pphm
HIGH TEMPERATURE RESISTANCE Tested to	Intermittent Continuous	+135°C (+275°F) +100°C (+212°F)
LOW TEMPERATURE RESISTANCE tested to...	-55°C (-67°F)	-74°C (-101°F)
COMPRESSION SET minimum...	25%	50%

\*Complete specification data and testing methods are available upon request.

## -sizing chart

Check diameter of pipe. Select the appropriate Universal Master Flash® for pipe or duct diameter. Only use maximum pipe diameters on minimal roof angles. For extreme pitch or surface irregularity select next larger size. Then refer to the part number for the Universal Master Flash® desired.

	Pipe Size	Compound	Part No.		Flashing Details	
#1	1/4" - 2-1/2" (6.4 - 63.5 mm)	Black EPDM	RD101BE		A-Top opening diameter	Closed
		Grey EPDM	RD101GG		B-Overall height	2.77" (70.4 mm)
		Silicone	RD101RG		C-Base dimensions	4.75" (120.7 mm)
#2	1-3/4" - 3" (44.5 - 76.2 mm)	Black EPDM	RD201BE		A-Top opening diameter	1.44" (36.6 mm)
		Grey EPDM	RD201GG		B-Overall height	3.53" (89.7 mm)
		Silicone	RD201RG		C-Base dimensions	6.21" (157.7 mm)
#3	1/4" - 5" (6.4 - 127 mm)	Black EPDM	RD301BE		A-Top opening diameter	Closed
		Grey EPDM	RD301GG		B-Overall height	3.64" (92.5 mm)
		Silicone	RD301RG		C-Base dimensions	7.74" (196.6 mm)
#4	3" - 6-1/4" (76.2 - 158.75 mm)	Black EPDM	RD401BE		A-Top opening diameter	2.38" (60.5 mm)
		Grey EPDM	RD401GG		B-Overall height	5.05" (128.3 mm)
		Silicone	RD401RG		C-Base dimensions	9.26" (235.2 mm)
#5	4-1/4" - 7-3/4" (107.96 - 196.85 mm)	Black EPDM	RD501BE		A-Top opening diameter	3.50" (88.9 mm)
		Grey EPDM	RD501GG		B-Overall height	4.43" (112.5 mm)
		Silicone	RD501RG		C-Base dimensions	10.75" (273.1 mm)
#6	5" - 9" (127 - 228.6 mm)	Black EPDM	RD601BE		A-Top opening diameter	4.25" (108 mm)
		Grey EPDM	RD601GG		B-Overall height	5.60" (142.2 mm)
		Silicone	RD601RG		C-Base dimensions	12.50" (317.5 mm)
#7	6" - 11" (152.4 - 279.4 mm)	Black EPDM	RD701BE		A-Top opening diameter	4.90" (124.5 mm)
		Grey EPDM	RD701GG		B-Overall height	5.84" (148.3 mm)
		Silicone	RD701RG		C-Base dimensions	14.60" (370.8 mm)
#8	7" - 13" (177.8 - 330.2 mm)	Black EPDM	RD801BE		A-Top opening diameter	5.80" (147.3 mm)
		Grey EPDM	RD801GG		B-Overall height	7.53" (191.3 mm)
		Silicone	RD801RG		C-Base dimensions	16.5" (419.1 mm)
#9	9" - 19" (228.6 - 482.6 mm)	Black EPDM	RD901BE		A-Top opening diameter	7.45" (189.2 mm)
		Grey EPDM	RD901GG		B-Overall height	8.09" (205.5 mm)
		Silicone	RD902RG		C-Base dimensions	25.25" (641.4 mm)