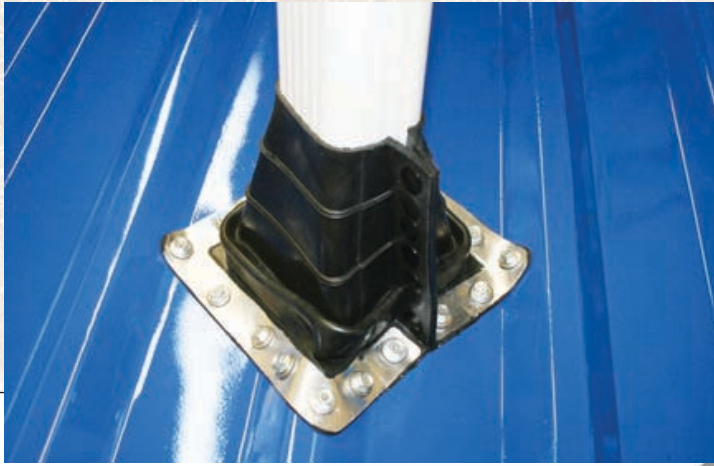


SQUARE VENT MASTER FLASH®

**20
YEAR
WARRANTY**

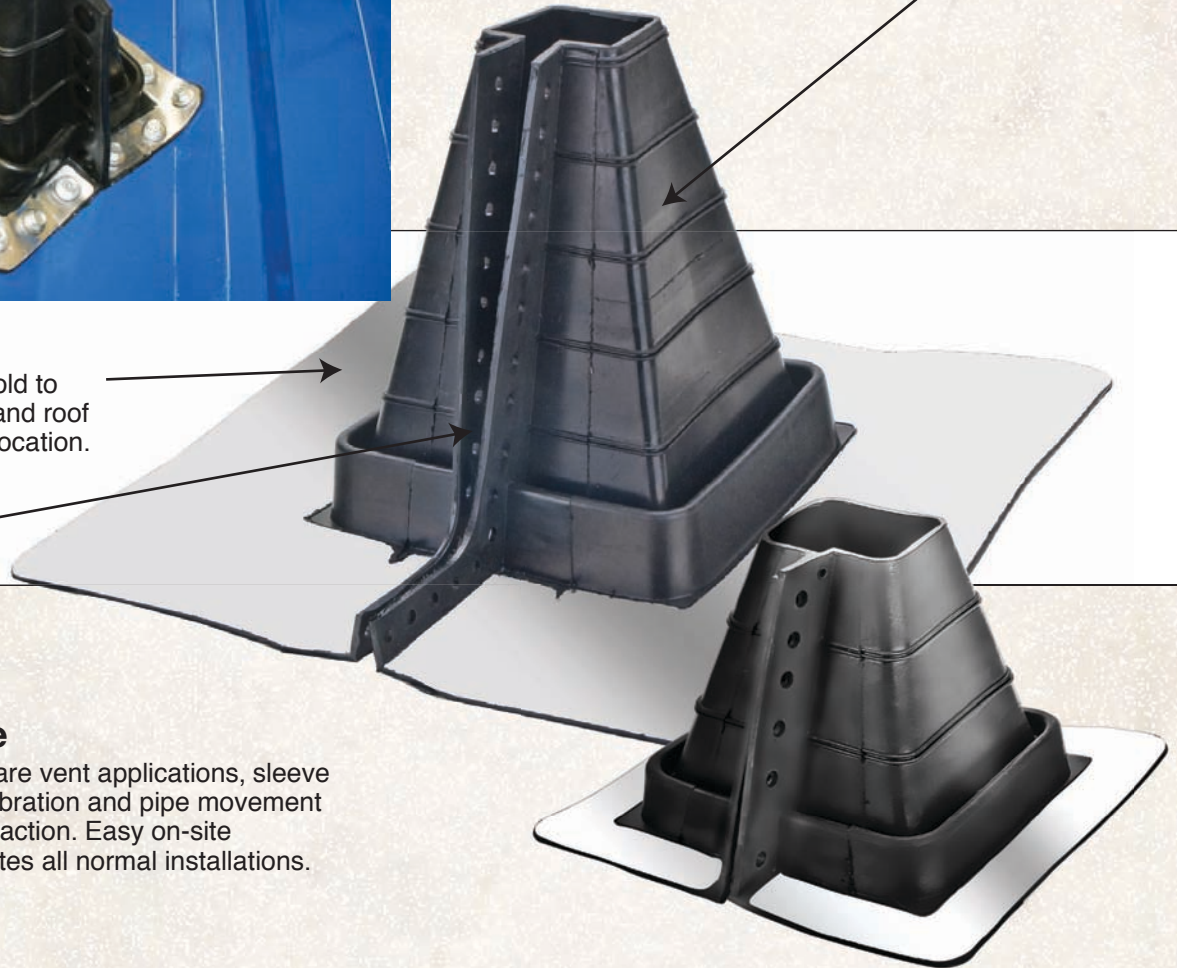


Made for Weather Resistance
Made to withstand the damaging effects of ultraviolet light and Ozone.

Roof Adaptability

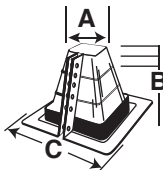
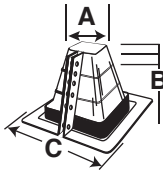
The base is designed to mold to most panel configurations and roof pitches regardless of pipe location.

Easy Install Snaps Included



Design Excellence

Specially designed for square vent applications, sleeve flexibility accommodates vibration and pipe movement caused by expansion/contraction. Easy on-site customization accommodates all normal installations.

	Pipe Size	Compound	Part No.		Flashing Details	
#1	2-1/2" - 4" (63 - 101.6 mm)	Black EPDM	RF101BP-SQ		A-Top opening diameter	2-1/2" (63mm)
					B-Cut to suit pipe size	2-1/2" to 4" (63-101mm)
					C-Base dimensions	8" (203.2mm)
#2	2-1/4" - 5" (57 - 127 mm)	Black EPDM	RF201BP-SQ		A-Top opening diameter	2-1/4" (57mm)
					B-Cut to suit pipe size	2-1/4" to 5" (57-127mm)
					C-Base dimensions	15-3/4" (400mm)

To see our complete product line go to www.aztecwasher.com

