

# STANDARD RETROFIT MASTER FLASH®

**20**  
YEAR  
WARRANTY

## TWO COMPOUNDS / 3 SIZES

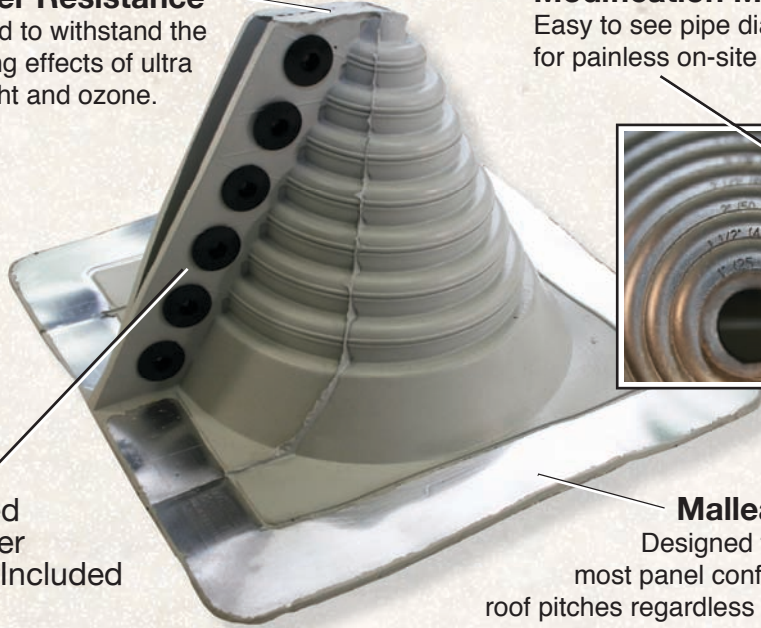
### Weather Resistance

Designed to withstand the damaging effects of ultra violet light and ozone.

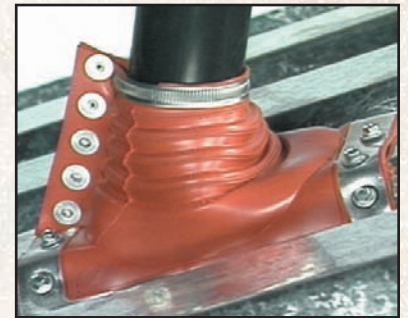
### Modification Made Simple

Easy to see pipe diameters make for painless on-site customization.

Easily  
Installed  
Fastener  
Snaps Included

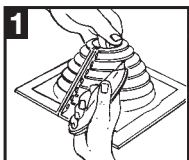


**Malleable Base**  
Designed to conform to most panel configurations and roof pitches regardless of pipe location.

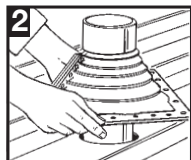


Silicone Retrofit Master Flash®

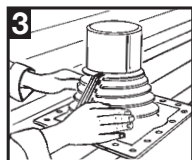
	PIPE SIZE	COMPOUND	PART NO		FLASHING DETAIL	
#1	1/2" - 4" (12.7 - 101.6mm)	BLACK EPDM	RF101BP		A-Top opening diameter	1/2" (12.7mm)
		GREY EPDM	RF101GP		B-Cut to suit pipe size	1/2" - 4" (12.7 - 101.6mm)
		SILICONE	RF102RS		C-Base dimensions	8-3/16" (81mm)
#2	4" - 9-1/4" (101.6 - 135mm)	BLACK EPDM	RF201BP		A-Top opening diameter	4" (101.6mm)
		GREY EPDM	RF201GP		B-Cut to suit pipe size	4" - 9-1/4" (101.6 - 235mm)
		SILICONE	RF202RS		C-Base dimensions	14-1/4" (362mm)
#3	9-1/4" - 16-1/4" (235 - 412.8mm)	BLACK EPDM	RF301BP		A-Top opening diameter	9-1/4" (235 - 412.7mm)
		GREY EPDM	RF301GP		B-Cut to suit pipe size	9-1/4" x 16-1/4" (235 - 412.7mm)
		SILICONE	RF302RS		C-Base dimensions	21-1/2" (546.1mm)



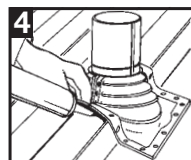
1 Choose appropriate Retrofit. If necessary trim opening to pipe diameter.



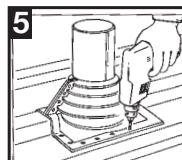
2 Wrap Retrofit around pipe and install all snap rivets to seal flange



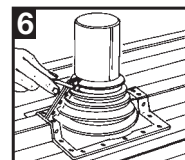
3 Press Master Flash® down, bending it to conform to roof profile or roof irregularities. A blunt tool will help press flashing into tight roof angles.



4 Apply silicone sealant between base, roof, and to the top of flashing



5 Use fasteners to complete sealing. For UPC installation, fastener spacing may not exceed 1-1/2" (38mm)



6 Install supplied cable tie at uppermost part of Retrofit and apply sealant to any gaps.



To see our complete product line go to [www.aztecwasher.com](http://www.aztecwasher.com)

