

RESIDENTIAL MASTER FLASH®

**20
YEAR
WARRANTY**

ISO Quality, Price & Availability / TWO COMPOUNDS / 9 SIZES

ADVANCED OZONE RESISTANCE tested to...	EPDM 70 hour @ 500 pphm	SILICONE 70 hour @ 500 pphm
HIGH TEMPERATURE RESISTANCE		
Tested to Intermittent	+135°C (+275°F)	+260°C (+500°F)
Continuous	+100°C (+212°F)	+225°C (+437°F)
LOW TEMPERATURE RESISTANCE tested to...	-55°C (-67°F)	-74°C (-101°F)
COMPRESSION SET minimum...	25%	50%

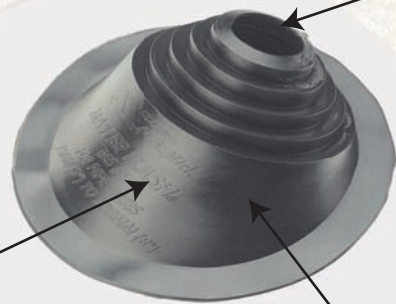
*Complete specification data and testing methods are available upon request.



The addition of fire retarding agents milled directly into the rubber compound creates a self extinguishing feature which enables it to be used with type "B" vents. Listed with IAPMO certification No.3121



The pull tab design and easy smooth tear grooving is intended to eliminate razor knives and allow for a circular hole

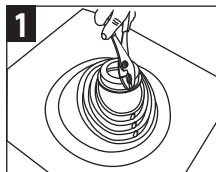


"Environmentally safe" lead free aluminum base.

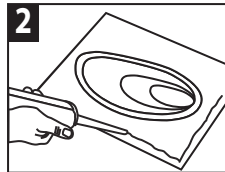
A "C20" ASTM additional requirement was added to assure conformance to the most stringent ozone/weathering specifications available. This addition allows the rubber a 20 year life.

The built in 20° pitch allows adaptability to almost any roof pitch including 45°

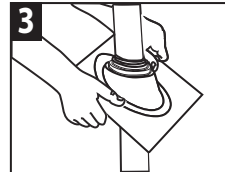
Installation



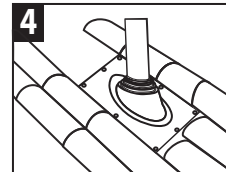
1 Pull tab design to correct pipe size



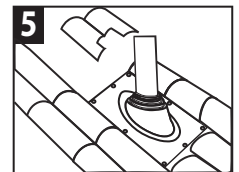
2 Apply sealant to back of flashing



3 Remove shingle/tile around pipe and slide flashing over pipe



4 Fasten flashing to roof



5 Cut shingles to fit to the flashing allowing the bottom of the flashing metal base to set on top of tiles.

To see our complete product line go to www.aztecwasher.com



13821 Danielson Street, Poway, CA 92064 • 1-800-WASHER 5 (927-4375) • Ph: 858-513-4350 • Fax: 858-513-4305

RESIDENTIAL MASTER FLASH®

20
YEAR
WARRANTY

APPLICATIONS



EPDM Rubber is available in black and grey or silicone is available.



Four Sizes Accommodate Flues & Vents From 1/4" Diameter Through 18" Diameter

	Pipe Size	Compound	Part No.		Flashing Details	
MINI	1/4" - 3" (6.35 - 76.2 mm)	Black EPDM	RS051BA		A-Top opening diameter	Closed
		Grey EPDM	RS051GA		B-Pull to suit pipe size	1/4" - 3" (6.35 - 76.2 mm)
		Silicone	RS052RA		C-Base dimensions	16" X 19-1/4" (410 X 490 mm)
#1	3" - 8" (76.2 - 203.2 mm)	Black EPDM	RS101BA		A-Top opening diameter	2-1/2" (63.5 mm)
		Grey EPDM	RS101GA		B-Pull to suit pipe size	3" - 8" (76.2 - 203.2 mm)
		Silicone	RS102RA		C-Base dimensions	20" X 24" (508 X 609.5 mm)
#2	8" - 11" (203.1 - 279.4 mm)	Black EPDM	RS201BA		A-Top opening diameter	5-5/8" (142.875 mm)
		Grey EPDM	RS201GA		B-Pull to suit pipe size	8" - 11" (203.1 - 279.4 mm)
		Silicone	RS201RA		C-Base dimensions	26" X 30" (660.3 X 762 mm)
#3	11" - 18" (279.4 - 457 mm)	Black EPDM	RS301BA		A-Top opening diameter	8-3/4" (222.2 mm)
		Grey EPDM	RS301GA		B-Pull to suit pipe size	11" - 18" (279.4 - 457 mm)
		Silicone	RS302RA		C-Base dimensions	35" - 35" (889 X 889 mm)